

FULLY-AUTOMATIC CARTONING MACHINE



UNITY X-1000



MACHINE SAMPLE
DOWNLOAD ARTIVE

Max Speed up to
200-400 Product/Min
30-80 Case/Min

- Carton Folding
- Carton Forming
- Carton Stacking
- Product Pushing

UNITY X-1000

CARTONING MACHINE



• High Performance

- ✓ High Speed.
- ✓ High Precision.
- ✓ Small Footprint.
- ✓ Durable Machine.

• Safety

The machines are designed according to machine safety standards to reduce and eliminate the potential for accidents and increase the safety of use addition. There is also a monitoring system. For monitoring a safety system that occurs every time it is used. For example, A machine will create a log of timestamps of the failure that came from the often-used cover guard. That will help to explain the low output from the machine.

• Reliability

Machine designed and calculated precisely by the design program. A machine was controlled on high control technology to make the machine more reliable, and able to produce work continuously 24 x 7 x 365 It also can diagnose failures when the machine fails. And collect data simultaneously with failure reports.

• Flexibility

Support a variety of products and packing.

• Changeover

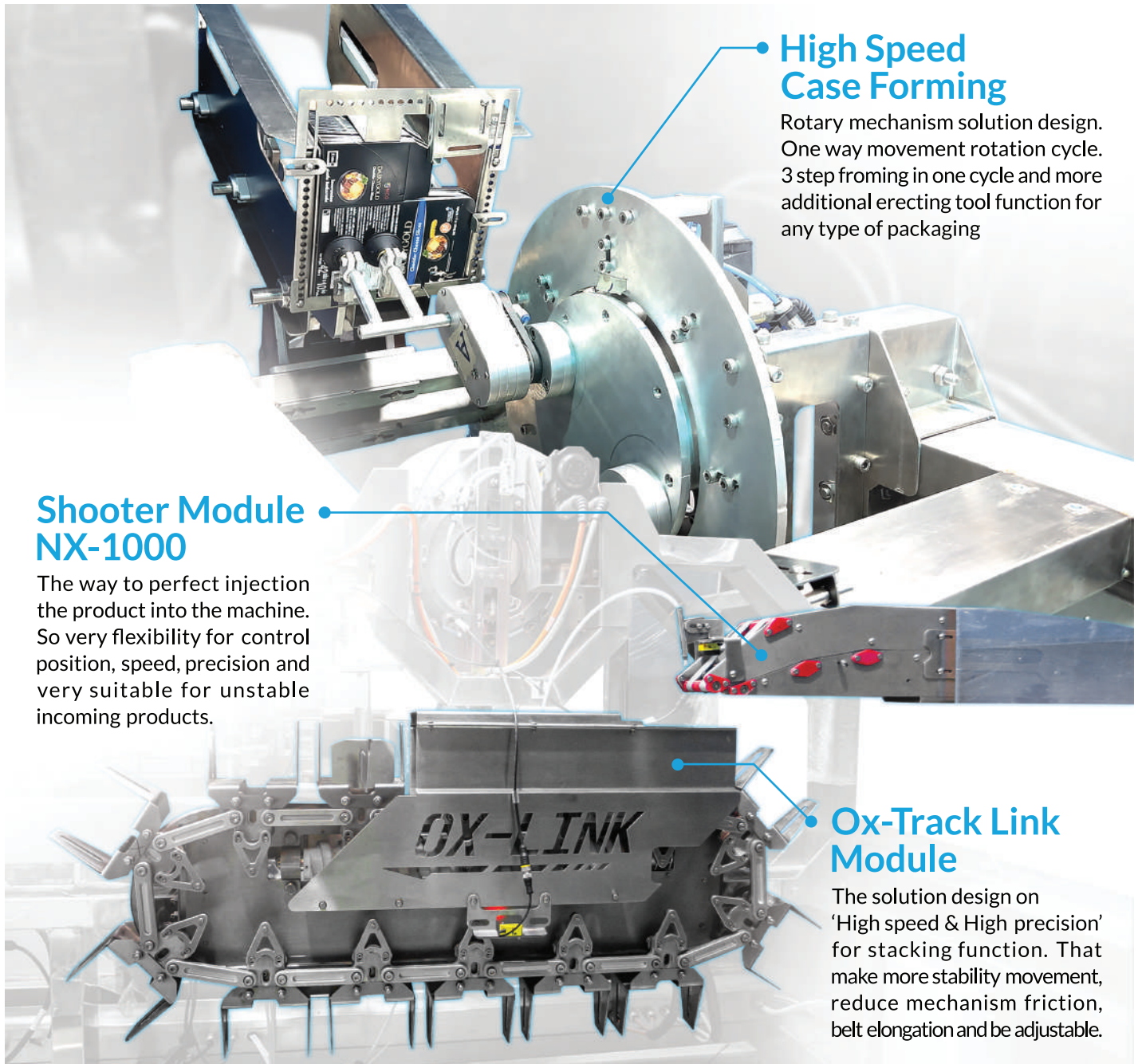
Easy to change a suitable module with a product.

The combination of ultimate design technology on the mechanism and control system creates the highest performance and flexibility of the machine. Compatible with a wide range of products, endless applications.



ULTIMATE TECHNOLOGY MODULE DESIGN

Max Speed up to
24,000 Product/Hour or **576,000** Product/Day



High Speed Case Forming

Rotary mechanism solution design. One way movement rotation cycle. 3 step forming in one cycle and more additional erecting tool function for any type of packaging

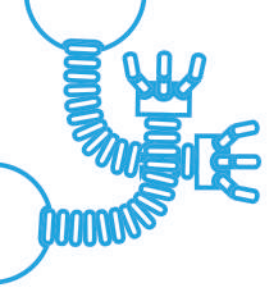
Shooter Module NX-1000

The way to perfect injection the product into the machine. So very flexibility for control position, speed, precision and very suitable for unstable incoming products.

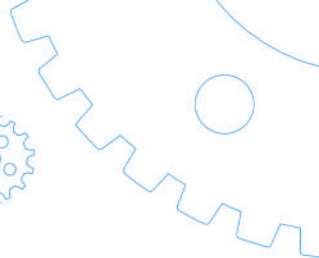
Ox-Track Link Module

The solution design on 'High speed & High precision' for stacking function. That make more stability movement, reduce mechanism friction, belt elongation and be adjustable.

Fabrication on platform Individual mechanism section module that will make easy for maintenance each mechanism section but can synchronize operating together by motor motion control function.

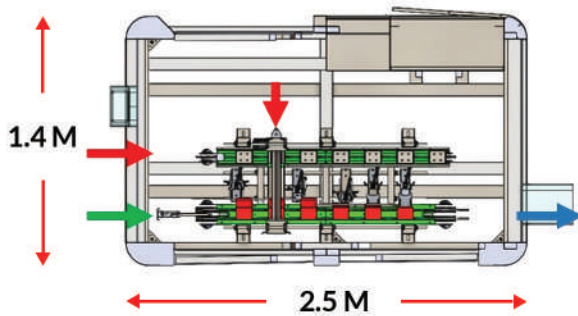


STRUCTURE



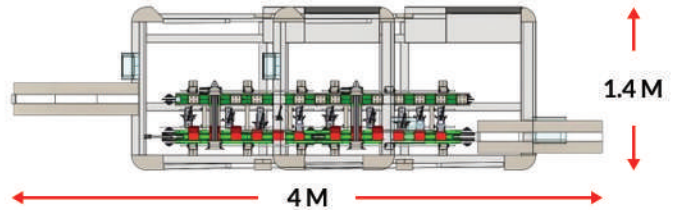
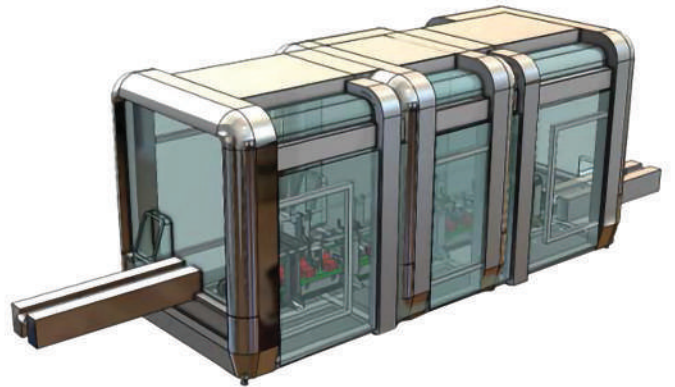
PUSH & SHOOT (K2030)

Design for Output 30-50 Case/Min

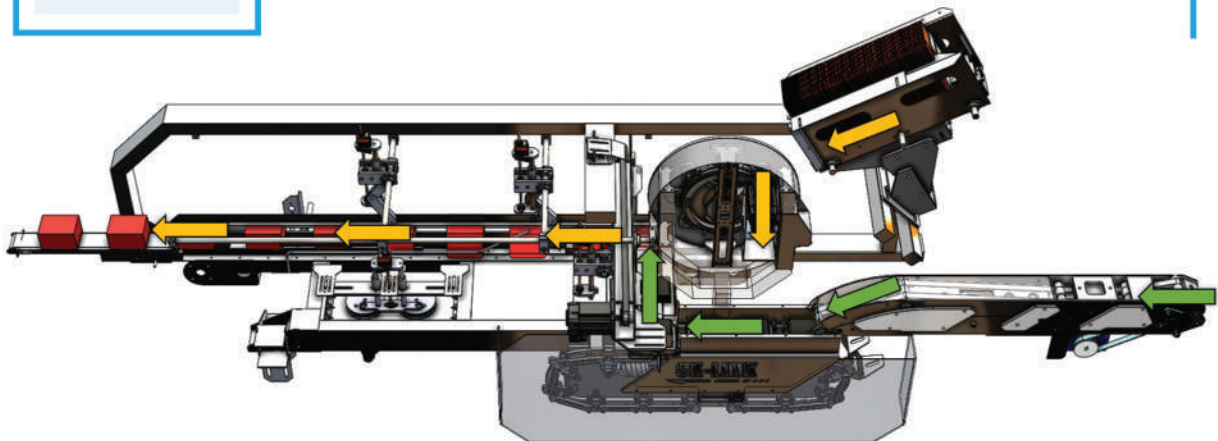


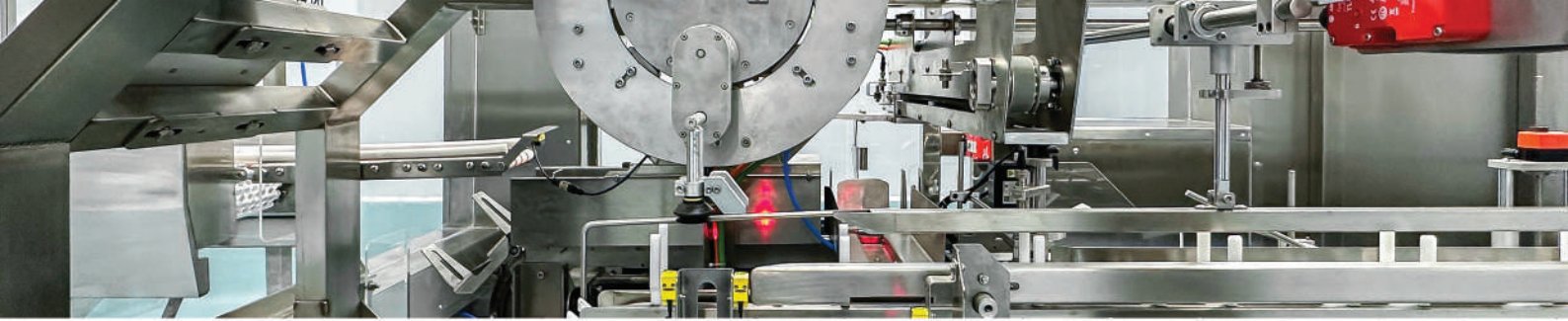
ROTARY SYSTEM (K4100)

Design for Output 50-80 Case/Min



PROCESS DIAGRAM





PACKING LINE STRUCTURE ● ● ● ● ● ●

STANDARD FEATURES

- HMI operating
- Jog control
- Detection system (Uncomplete Packing)
- Touch to stop (Safe to damage)
- Reducing machine size
- Press to lock & unlock tool
- Productivity collecting
- Safety guard interlock system (Guardmaster safety relay achieve PLe, SIL3 per ISO 13849-1, IEC 62061)
- Datalogging with export to SD or USB
- Export alarm history to SD or USB
- Rockwell control system
- Remote access with VNC
- Real-time monitor trending
- Language switching
- PDF viewer the user guide operate quick and easy safety monitor
- Single protocol (Ethernet/IP network)
- Diagnostic network connection
- Automatic assign IP Address
- Alarm monitor to troubleshooting
- Spare part recommend
- Servo motor torque warning
- Capacity performance monitoring and troubleshooting (Servo feature)

OPTIONAL FEATURES

- Tool customization
- Infeed managing
- Outfeed managing
- Outfeed Lifting
- Gluing system
- Automatic Adjust
- Uncomplete packaging rejection
- Missing product detect & rejection
- OEE monitoring
- Email notification of period PM
- IOT dash boards monitor

Technical Specifications

Capability	Infeed Outfeed	: Speed up to 200 Product/Min : Speed up to 400 Product/Min : Speed up to 50 Case/Min : Speed up to 80 Case/Min	For Push & Shoot Design For Rotary Design For Push & Shoot Design For Rotary Design
MA Dimensioning	Push & Shoot Design Rotary Design	: 1.4 x 2 x 2.5 M : 1.4 x 2 x 4 M	
MA Customizing	Material	: Steel , SUS , Aluminium	
MA Weight	Push & Shoot Design Rotary Design	: 680 KG.	
System Device	Control Device Electrical Device	: Rockwell : ABB , Schneider , Nidec , Mitsubishi	
Blank Format			
Electrical Standards	Power Supply, Control Circuit Power Consumption		
Pneumatic	(None)	(None)	

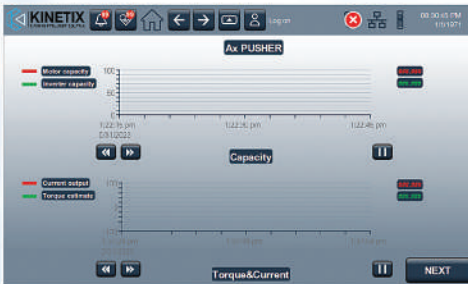


FUNCTION CONTROL



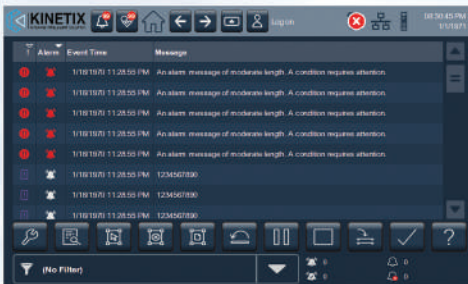
• Real-Time Monitor

Provide trend graphs to your hands to make an operation direction.



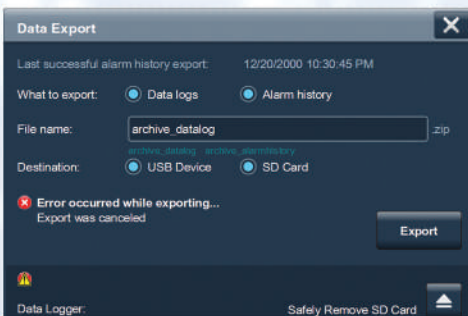
• Alarm

Alert and summarise the machine's error, helping you analyze and solve a critical point.



• Data log export

Back up and secure your data on an extended device.



• Visual torque limit

Self-analyze and protect your equipment before the damage.



Machine Control Panel

User-friendly Interface and Monitor.



Optional



• Overall Equipment Effectiveness (OEE)

Improving your production processes with a machine performance analyzer.

• IOT

Machine on your hand, flexibility for monitoring and control via a cloud network.

• Predictive Maintenance

Prediction and Notify team for maintenance by mail.
Notify the team of preventive maintenance by mail.

SMART MACHINE SAFETY



● Smart Safety

Our Smart Safety products are integral to The Connected Enterprise they can help enhance safety while optimizing your production and maintenance.

● Smart Safety Increases Productivity & Operational Resilience in The New Normal

Digital transformation acceleration is driving the demand for smart safety solutions, which are now an essential component of a manufacturer's and processor's operational resilience strategy, and a key enabler of achieving the productivity required to thrive in this new normal. To meet this demand, Kinetix Machine Intelligent Solution has further enhanced its broad portfolio of smart safety solutions designed to help its customers accelerate their digital transformation journey.



Rockwell
Automation



the spirit of safety



● Machine Uptime from Smart Safety Data

You are able to pinpoint an issue on your line from the information delivered by the smart safety devices and able to identify an increase in the number of times equipment in a safely guarded area had to be accessed.

● Reduced Downtime Using Alternative Measures

Alternatives to traditional lockout/tagout procedures offer opportunities for manufacturers to improve worker safety and productivity.

● Safety Interlock Switch

● Safety Controller

● Emergency Stop Switch



PRODUCT APPLICATION

Snack and Food



Cheese



Cracker



Cookie



Chocolate



Coffee & Tea

Pharma



Chemineral Salt



Pills



Capsule



Pack of Pills

Health Care



Tissue



Soap



Toothpaste



Hair Treatment

► PACK SIZE



PACKAGING SIZE

WIDTH : 80 [MIN] - 220 [MAX]
LENGTH : 80 [MIN] - 260 [MAX]
HIGHT : 60 [MIN] - 180 [MAX]

Case Template



ABOUT KINETIX ▶

KINETIX Co., LTD. head office located in Nonthaburi and a Machinery factory located in Bangkok

We're a manufacturer of packaging machinery design. Pallet packing machine, Box pickup from pallet and design the customize machines to the customers' requirements. Our has brought technology from Europe to develop our machines, to increase the efficiency of the machine by Motion control synchronized technology reduces the complexity of mechanic, which results in the speed of the machine and high precision. Our machines combine high technology such as Robotic under the KUKA brand for higher performance and greater reliability.

We're automation design systems for industrial plants by applying modern technology. To help support our customers in stepping up to Digital Transformation. Increase production capacity and reduce operating Costs for you With PLC SCADA HMI programming on the automatic control system. And design a production system for controlling variables Such as temperature, pressure, flow level, displacement position To increase the productivity of the product and increase the quality of the operation in the industrial plant according to the needs of the customer.

We're a distributor of products. Leading electronics brands around the world recognize their high-quality performance, including Allen Bradley, Siemens, and many more. With a team of experienced workers to advise on selection in order to meet customer needs in order to extend the life of the machine and use it efficiently

We're very pleased to provide service & support serves to customers 7 days a week, 365 days a year and expanding the service center to the region For the speed of remote access via the internet to solution solve for all urgent case.

▶ CERTIFICATE



Recognized System Integrator



Automation System Integrator



Supplier Performance Excellence Award 2022



Rockwell Automation Highest Growth



Rockwell Automation Best Performer Silver Partner

▶ OUR CUSTOMER






KINETIX

MACHINE INTELLIGENT SOLUTION


Smart Service

Onsite | Online | On Cloud

 +662 150 2108

 sales@kinetix.co.th

 <https://www.kinetix.co.th>

 9/64 Moo 8 Bangkrui-Sainoy Rd., Banglen,
Bangyai, Nonthaburi 11140, Thailand



www.kinetix.co.th

